

With 20-years of expertise managing global SAP ecosystems, OZSoft extends its SAP monitoring capabilities into the HANA platform. OZSoft HANA Management Pack enables HANA Management through the power and flexibility of System Center Operations Manager (SCOM).

### USAGE SCENARIO

As the technology age looms more and more companies are faced with the problem of big data or datasets that exceeds the abilities of traditional tools. HANA provides the solution to manage big data challenges. HANA is the latest leading in-memory database technology and data management to increase application performance and HANA's fundamental resource is memory.

You have invested significant resources into running HANA so ensuring its availability and health are critical success factors, however managing the complex operations of HANA landscape can be time-consuming without central

monitoring. The OZSoft HANA Management Pack for SCOM bridges this gap for organizations utilizing SCOM as its enterprise monitoring framework.

### HETEROGENEOUS SUPPORT

Connects to HANA Systems remotely running on any approved SAP HANA infrastructure or appliance.

### SMALL FOOTPRINT

OZSoft HANA Management Pack is built with advanced Managed Modules minimizing SCOM performance overhead.

### MINIMAL PREREQUISITES

SCOM 2012 SP1 & R2

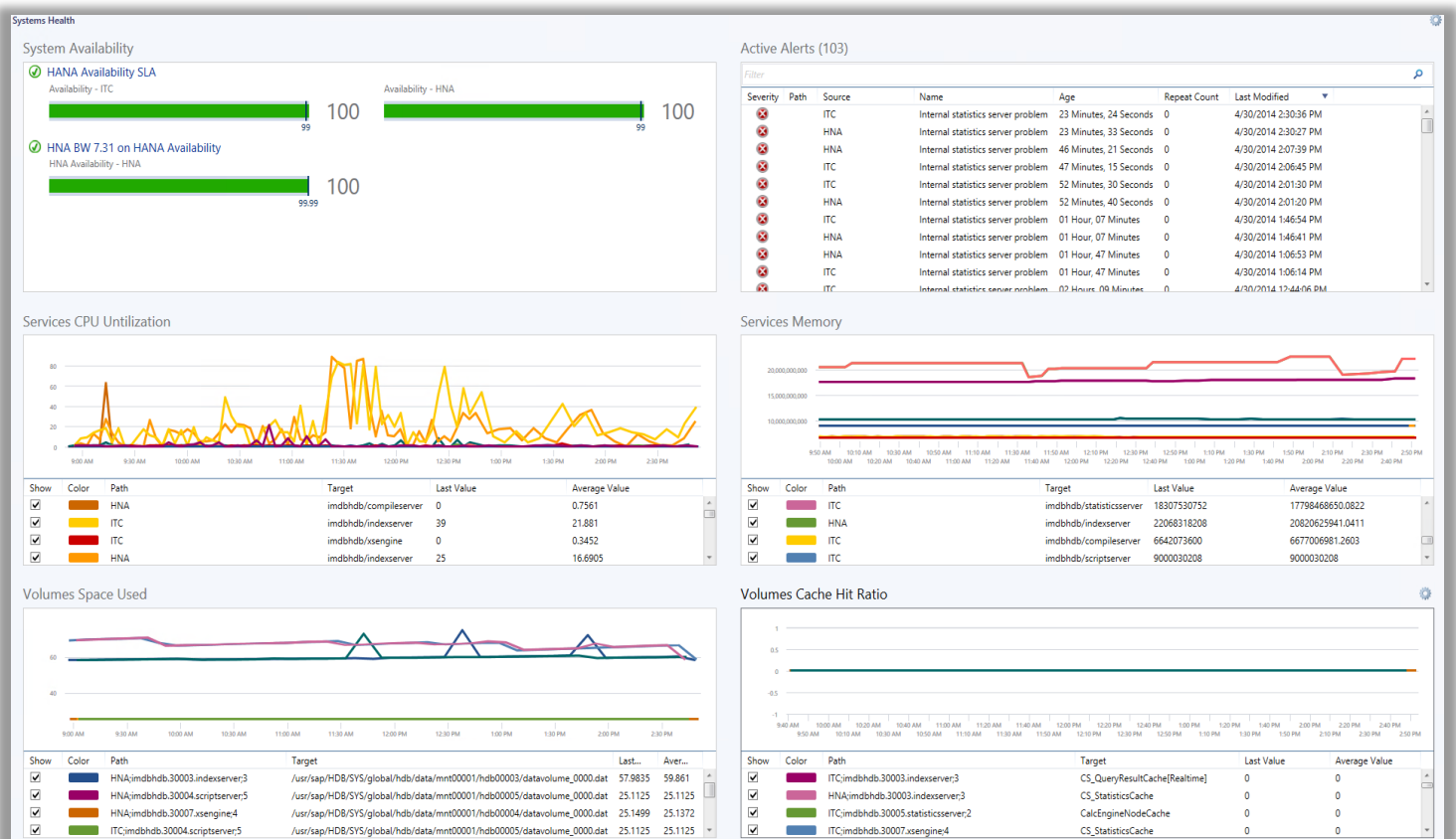


Figure 1: Health Dashboard

## AVAILABILITY MONITORING

Hosts and Services availability is monitored via redundant methods ensure reliability of availability data and presented in SCOM hierarchical Health Explorer.

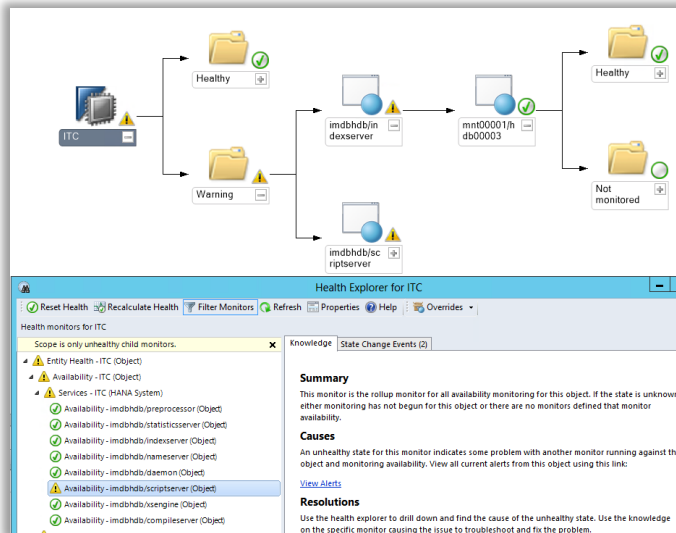


Figure 2: Availability Hierarchy

## ALERT MANAGEMENT

HANA Alerts are forwarded to SCOM Alert, preserving HANA information through the use of custom fields. With additional alert filtering and suppression the Management Pack allows for flexible alert management.

## PERFORMANCE MONITORING

The OZSoft HANA Management Pack offers various monitoring aspects such as hosts, services, volumes, cache, utilization, expensive SQL statements and a growing list of performance metrics, which can be charted in SCOM Performance views, Dashboards, or integrated with SCOM Data Warehouse for reporting.

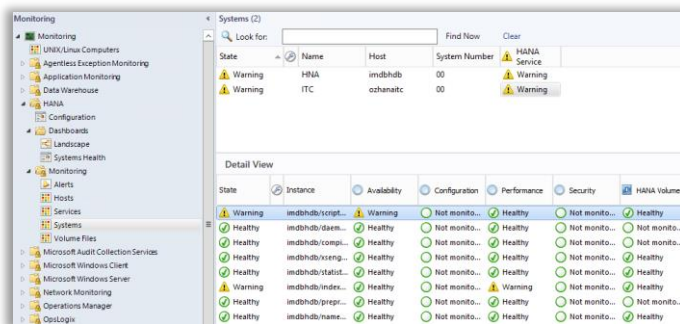


Figure 3: HANA Services & Components

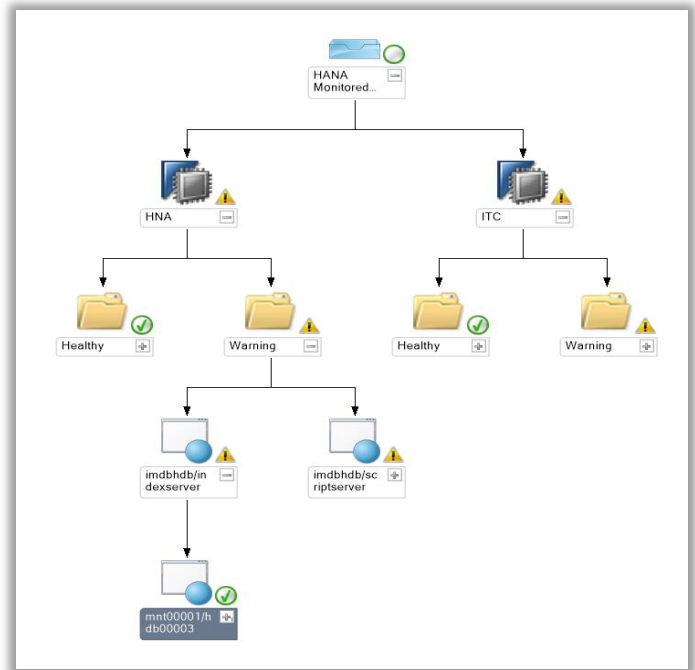


Figure 4: HANA Landscape

## CONTACT INFORMATION

For further information and/or a free trial, contact:

Sales and Marketing: [sales@ozsoft-consulting.com](mailto:sales@ozsoft-consulting.com)

Web: <http://ozsoft-consulting.com/mp4hana>

Technical support: [support@ozsoft-consulting.com](mailto:support@ozsoft-consulting.com)

## ABOUT OZSOFT

OZSoft Consulting Corporation, the SAP Performance Management Specialist, has been providing SCOM and SAP integrated monitoring since 2009, as well as cloud-based SAP Systems Management as a Service powered by IT-Conductor

