

## for Microsoft System Center Operations Manager

With 20-years of expertise managing global SAP ecosystems, OZSoft extends its SAP monitoring capabilities into the SAP BusinessObjects Business Intelligence (BI) platform. OZSoft BusinessObjects Management Pack enables BI Platform Management through the power and flexibility of System Center Operations Manager.

organizations utilizing SCOM as its enterprise monitoring framework.

### USAGE SCENARIO

SAP BusinessObjects BI platform provides flexible systems management for an enterprise BI standard that allows administrators to confidently deploy and standardize their BI implementations on a proven, scalable, and adaptive service-oriented architecture

### HETEROGENEOUS SUPPORT

The Management Pack monitor BusinessObjects Platform remotely running on any infrastructure.

### SMALL FOOTPRINT

OZSoft Management Pack is built with advanced Managed Modules minimizing SCOM performance overhead.

### MINIMAL PREREQUISITES

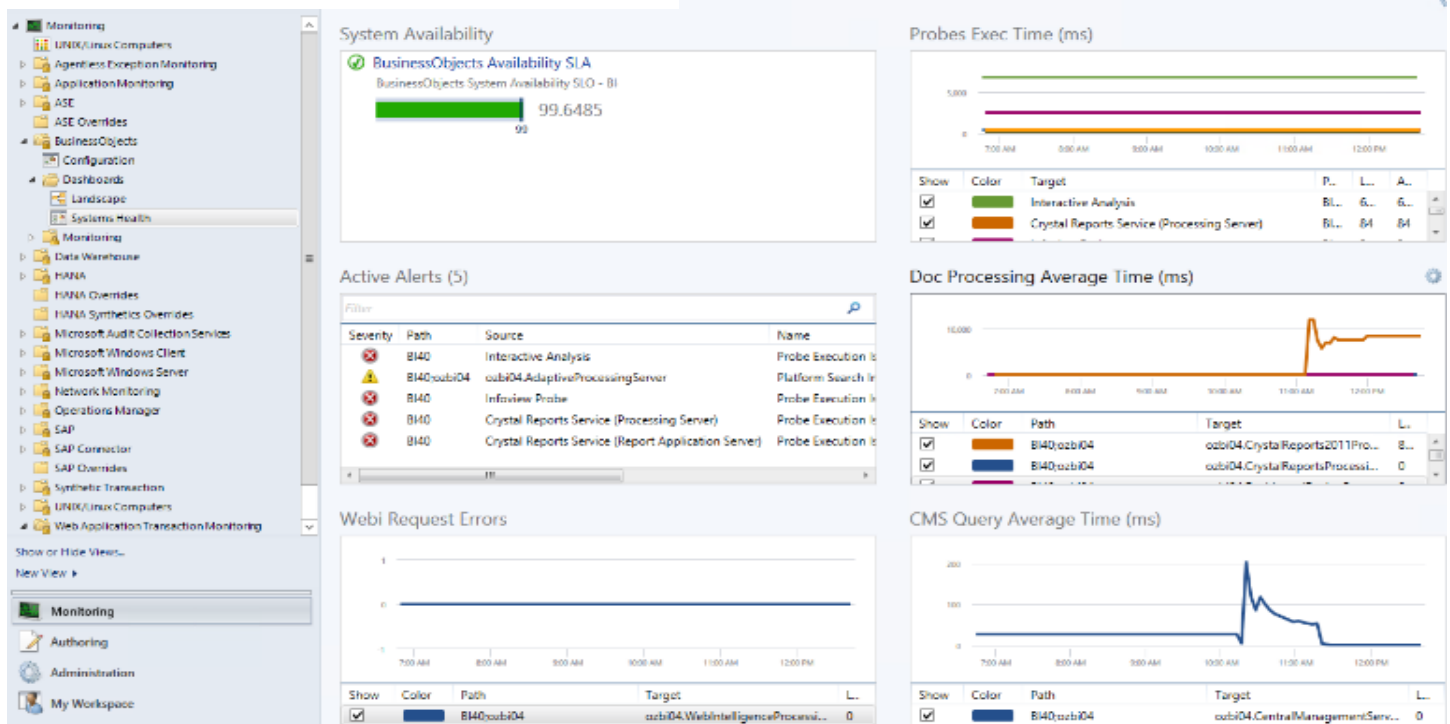
SCOM 2012 SP1 & R2, with Management Server on Windows 2008 R2 or later (with minimal .NET 2.0). BOBJ 4.0 or later

In today's world the BI platform became one of the mission critical assets that your organization relies upon for making the inform decisions. The underlying complexity of the technology make the operations of BI platforms in general and BusinessObjects in particular highly dependent on effective IT Operations, that in turn depend on thorough and proactive centralized monitoring. The OZSoft Management Pack for SCOM is the integral part of IT Operations for

### CENTRALIZED MONITORING

You don't need to logon into BusinessObjects Central Management Console every time you need to check the status of your environment. All alerts, traces and metrics are available in SCOM with centralized thresholds and alerts management.

Figure 1: BusinessObjects Health Dashboard



## AVAILABILITY MONITORING

Enterprise Nodes and BOBJ Servers availability is monitored via redundant methods ensure reliability of availability data and presented in SCOM hierarchical Health Explorer.

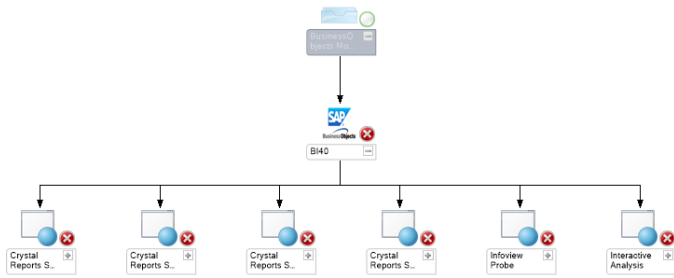


Figure 2: BOBJ Landscape

## ALERT MANAGEMENT

BOBJ Monitoring Events are forwarded to SCOM Alert. Optionally, Nodes' and Servers' Trace logs are constantly monitored for the new entries that posted as SCOM Alert giving the unprecedented awareness of what is really going on with your BI platform. With additional alert filtering and suppression the Management Pack allows for flexible alert management.

## PERFORMANCE MONITORING

The OZSoft BOBJ Management Pack fully matches native CMC Monitoring covering all Server metrics reported by the platform.

Additionally the Management Pack integrates the monitoring and auto restart of important BI Windows Services. All collected metrics which can be charted in SCOM Performance views, Dashboards, or integrated with SCOM Data Warehouse for reporting.

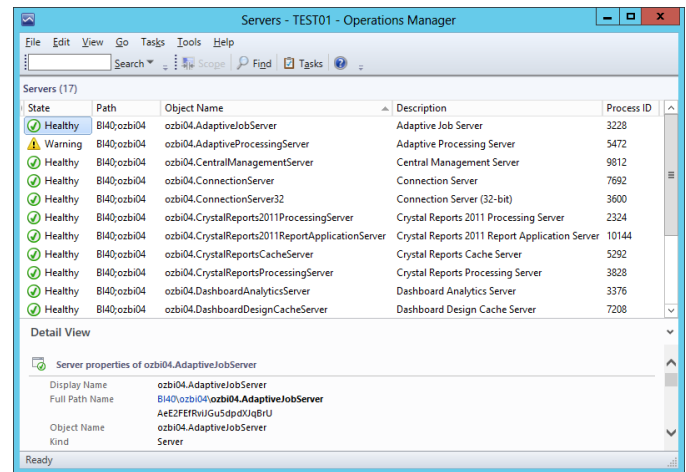


Figure 3: BusinessObjects Servers

## SYNTHETIC MONITORING

BOBJ Management Pack fully integrates BUSINESS Objects Probes monitoring. Probes' execution time and status are collected as performance counters that can be charted in SCOM Performance views, Dashboards, integrated with SCOM Data Warehouse for reporting or set the threshold to trigger SCOM Alerts

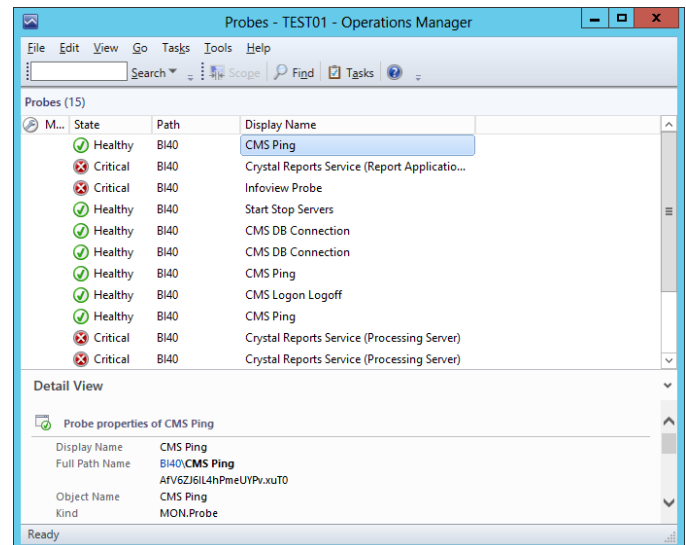


Figure 4: BusinessObjects Probes

## CONTACT INFORMATION

For further information and/or a free trial, contact:

Sales and Marketing: [sales@ozsoft-consulting.com](mailto:sales@ozsoft-consulting.com)

Web: <http://ozsoft-consulting.com/mp4bobj>

Technical support: [support@ozsoft-consulting.com](mailto:support@ozsoft-consulting.com)



## **BusinessObjects Management Pack**

for Microsoft System Center Operations Manager

### ABOUT OZSOFT

OZSoft Consulting Corporation, the SAP Performance Management Specialist, has been providing SCOM and SAP integrated monitoring since 2009, as well as cloud-based SAP Systems Management as a Service powered by IT-Conductor

