

**for Microsoft System Center Operations Manager**

With 20-years of expertise managing global SAP ecosystems, OZSoft extends its SAP monitoring capabilities into the SAP (Sybase) ASE platform. OZSoft ASE Management Pack enables SAP ASE Management through the power and flexibility of System Center Operations Manager (SCOM).

**USAGE SCENARIO**

You have invested significant resources into running ASE so ensuring its availability and health are critical success factors, however managing the ASE DBMS without central monitoring can be time-consuming and let the problems go unnoticed. The OZSoft ASE Management Pack for SCOM bridges this gap for organizations utilizing SCOM as its enterprise monitoring framework.

**HETEROGENEOUS SUPPORT**

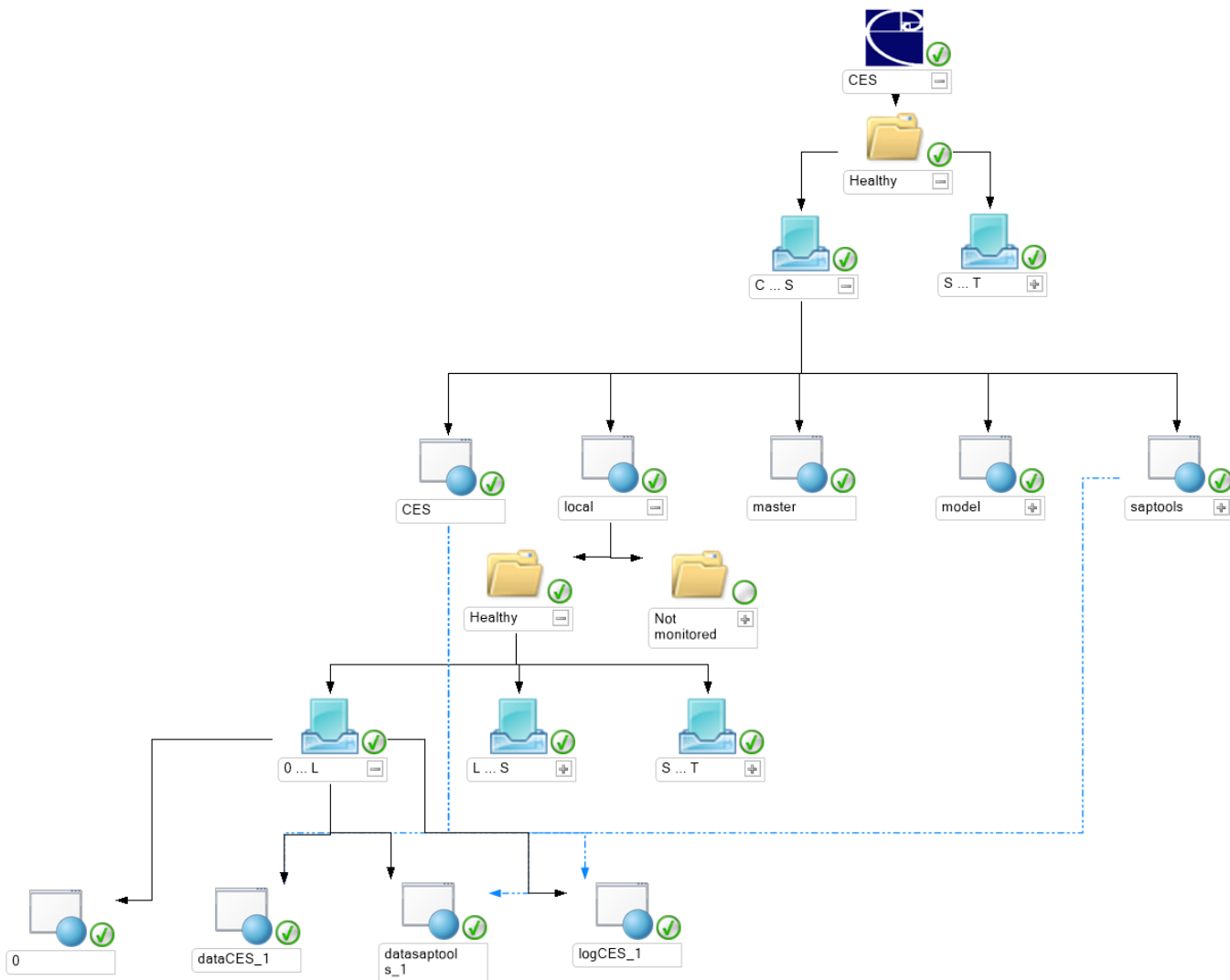
OZSoft ASE Management Pack connects remotely to ASE Servers running on any platform.

**SMALL FOOTPRINT**

OZSoft ASE Management Pack is built with advanced Managed Modules minimizing SCOM performance overhead.

**MINIMAL PREREQUISITES**

SCOM 2012 SP1 & R2

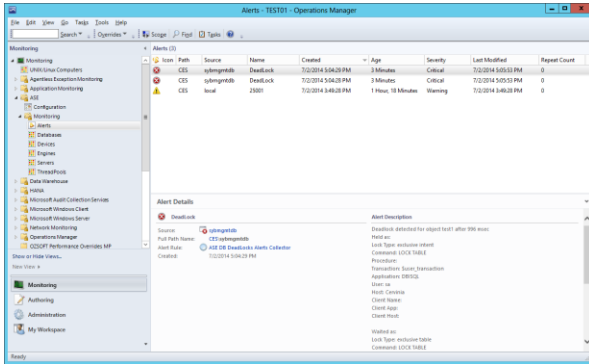


## AVAILABILITY MONITORING

Hosts and Services availability is monitored via redundant methods ensure reliability of availability data and presented in SCOM hierarchical Health Explorer.

## ALERT MANAGEMENT

ASE Error Log and Deadlock events are forwarded to SCOM Alert. With additional alert filtering and suppression the Management Pack allows for flexible alert management.



## CONTACT INFORMATION

For further information and/or a free trial, contact:

Sales and Marketing: [sales@ozsoft-consulting.com](mailto:sales@ozsoft-consulting.com)

Web: <http://ozsoft-consulting.com/mp4ase>

Technical support: [support@ozsoft-consulting.com](mailto:support@ozsoft-consulting.com)

## ABOUT OZSOFT

OZSoft Consulting Corporation, the SAP Performance Management Specialist, has been providing SCOM and SAP integrated monitoring since 2009, as well as cloud-based SAP Systems Management as a Service powered by IT-Conductor



## PERFORMANCE MONITORING

The OZSoft ASE Management Pack offers various monitoring aspects such as Databases, Devices, Engines, Thread Pools and a growing list of performance metrics, which can be charted in SCOM Performance views and Dashboards, or published to SCOM Data Warehouse for reporting.

